

销售热线: 0512-36851571,36851575

服务热线: **400-820-4599**

上海威茨堡电梯有限公司

WELLS ELEVATOR PRODUCTS CO.,LTD.

公司地址: 上海市中春路7001号明谷科技园D幢

Company Add: Building D, No.7001. Zhongchun Road, Shanghai

中国生产基地: 苏州昆山千灯景唐南路221号

Factory Add: Jingtang Road (South) 221, Qiandeng Town, Kunshan

德国总部: Schlierbachstrasse 32, Ellwangen D-73479, Germany

电话(Tel): 021-59227624

传真(Fax): 021-54221269

邮箱(E-mail): sales@wellslift.com

www.wells-elevator.com

本书为一般信息类出版物, 我们保留随时更改产品设计和说明的权利。

本书的任何字句, 无论其字面意思或含义, 对于任何产品及该产品的用途和质量, 或者任何购销合同条款的表述与更改均不承担任何责任。

上海威茨堡电梯有限公司 2016年04月印刷



立足德国科技, 铸就精品威茨堡

Base On German Technology
Make Competitive Products



自动扶梯/人行道
Escalator/Moving walk

STVA 品牌/电话 0579-88138500 13511315781



扫描二维码
关注上海威茨堡门户网站

上海威茨堡电梯有限公司
WELLS ELEVATOR PRODUCTS CO.,LTD.

公司简介

上海威茨堡电梯有限公司成立于2005年，是与德国WURZBURG电梯有限公司合作建立的集电（扶）梯产品开发、设计、生产和销售为一体的专业整机生产企业。依托德国先进的电梯技术和管理经验，以及多年的跨国技术合作，凭借企业优秀的技术团队和先进的生产设备，为客户提供优质的服务、完善的解决方案和高品质的产品，整合优势资源，提升实力，领袖行业。

威茨堡电梯正用国际化的产品标准和操作经验为中国的地标建筑提供优质服务。我们将致力于打造世界一流的电梯制造基地，为市场提供满足并超越顾客所需的产品和服务。公司产品获得了德国TUV机构的CE产品安全质量认证，质量管理体系获得了美国质量体系认证机构（CAS）的ISO质量体系认证。

威茨堡电梯——扩展生活与居住空间



上海威茨堡电梯有限公司厂房二期



上海威茨堡电梯有限公司厂房一期

COMPANY PROFILE

WELLS Elevator Products CO.,LTD. founded in 2005, cooperated with Wurzburg Aufzuege GmbH. combines development, design, manufacture and sales as a whole of the professional production enterprises for elevator and escalator. Based on German advanced elevator technology and management experience, as well as the international technical cooperation for many years, with excellent technical team and advanced production equipment. We provide high quality products, right solutions and satisfying service; with integrating the advantage of resources, enhancing the competence, to become the leader of the industry.

WELLS Elevator provides high quality services for the clients in China, Asia Pacific and all over the world by applying international standards and operation experience. We will work to build a world-class elevator manufacturing base, provide the products and services which meet or beyond customers demand. Several product lines have been approved by TUV and get CE certificate, company quality management is also approved by American Company CAS and get the ISO9001 certificate.

WELLS---We Extend Life and Living Space.

ESCALATOR DESIGN

自动扶梯设计



普通型及苗条型自动扶梯严格按照欧洲EN115标准和国家标准GB16899标准设计制造，运行平稳、静音、安全可靠，其模块化设计理念，融入每一细节，具备广泛的功能及选择多样化特点，满足不同客户的需求和配合建筑物的风格和整体形象。

Escalators of common type and slim type are designed and manufactured strictly according to EN115 the standard in Europe and the GB16889 standard in China. They are safe and reliable, run steadily and silently. Our modular design idea is integrated into each detail, which makes them possessing broad functions and the characteristics of diversification of choice in order to meet the needs of different users and go with the style and the whole image of the building.

主要规格

Main specification

安装场合：室内
运行时间：每天可运行16小时
提升高度：1.0~7.5m(35°仅用于6m以下)
倾斜度：30°/35°
梯级宽度：600/800/1000mm
水平梯级：2/3级
速度：0.5m/s
输送能力：3600/4800/6000人/小时
电源供应：三相交流380V/50HZ
照明电源：单相220V/50HZ

Installation place: Indoor

Transit/running time: 16 hours per day
Rise height: 1.0~7.5m(35°only used for lower than 6m)
Inclination: 30°/35°
Step width: 600/800/1000mm
Horizontal steps: 2/3 steps
Speed: 0.5m/s
Delivery capacity: 3600/4800/6000 persons per hour
Power supply: Three phases AC 380V/50HZ
Lighting power: Signal phase AC 220V/50HZ

外观设计

Exterior design

扶手设计：普通型/苗条型垂直玻璃扶栏10mm厚钢化玻璃
扶手支架：铝合金/发纹不锈钢
扶手带：黑色环状硫化橡胶带，内嵌钢丝绳，可选其它颜色
内外盖板：发纹不锈钢
围裙版：发纹不锈钢/钢板涂Teflon
处理梯级：不锈钢冲压成形，黑色电泳漆，黑色安全边界
梯级安全标记：周边黄色聚碳酸酯安全边界
乘降板：不锈钢冲压防滑面板，可选蚀刻不锈钢，带黑色防滑图案
操作板：红色急停按钮和上下行启动钥匙开关
梯级间隙照明：日光灯绿光照明

Handrail design: Common type/slim type, vertical 10mm tempered glass of high security
Handrail bracket: Aluminum alloy/hairline SS
Handrail: Sulfurized black rubber ring-belt, enhanced with steel wire rope(other colors of options)
Exterior/interior panel or decking: Hairline SS
Skirt board: Hairline SS / steel board coated with Teflon
Step: Rammed stainless steel, black electrophoresis paint, yellow security border
Security sign of steps: Yellow polycarbonate safty line
Boundary landing board: Rammed antislip stainless-steel (etched stainless steel for option with black antislip patterns)
Operation panel: Red emergency stop button and key switch to up or down
Lighting under step: Green fluorescent lamp

ESCALATOR OF PUBLIC TRANSPORT TYPE

公共交通型自动扶梯



公共交通型自动扶梯适用安装在户内和户外，具有多种选配功能，可以满足客户的各种需求。公共交通型自动扶梯能满足大客流量，长时间连续运行的要求，能承受各种十分恶劣和苛刻的环境状况。

Escalator of public transport type is fit for both indoors and outdoors. It has kinds of optional functions and is able to satisfy the different needs of the customers. The public transportation type can transport large amount of passengers and work for a long time. What' s more, it can be used in all kinds of bad environment conditions.

主要规格

Main specification

安装场合：室内/半户外/户外
运行时间：每天可运行24小时
提升高度：1.0~15.0m (35°仅用于6m以下)
倾斜度：30°/35°
梯级宽度：600/800/1000mm
水平梯级：2/3级
梯路上部曲率半径：1500/2700mm
速度：0.5m/s
输送能力：3600/4800/6000人/小时
电源供应：三相交流380V/50HZ
照明电源：单相220V/50HZ

Installation place: Indoor/semi-outdoor/outdoor
Transit/running time: 24 hours per day
Rise height: 1.0~15.0m(35°only used for the rise less than 6m)
Inclination: 30°/35°
Step width: 600/800/1000mm
Horizontal steps: 2/3 steps
Upside curvature radius of escalator steps: 1500/2700mm
Speed: 0.5m/s
Delivery capacity: 3600/4800/6000 persons per hour
Power supply: Three phases AC 380V/50HZ
Lighting power: Signal phase AC 220V/50HZ

外观设计

Exterior design

扶手设计：垂直玻璃扶栏/倾斜不锈钢扶栏
扶手支架：铝合金/发纹不锈钢
扶手带：黑色环状硫化橡胶带，内嵌钢丝绳
内外盖板：发纹不锈钢
围裙版：发纹不锈钢/钢板涂Teflon处理
梯级：不锈钢或铝合金
梯级安全标记：黄色塑料安全边界
乘降板：蚀刻不锈钢，带黑色防滑图案
操作板：红色急停按钮和上下行启动钥匙开关
梯级间隙照明：日光灯绿光照明

Handrail design: Vertical glass balustrade panel / inclined stainless-steel balustrade panel
Handrail bracket: aluminum alloy / hairline SS
Handrail: sulfurized black rubber ring-belt, enhanced with steel wire rope
Exterior/interior panel or decking: Hairline SS
Skirt board: Hairline SS / steel board coated with Teflon
Step: Cast aluminum / stainless steel
Security sign of steps: yellow plastic safety line
Landing board: rammed antislip stainless-steel (etched stainless steel for option with black antislip patterns)
Operation panel: Red emergency stop button and key switch to up or down
Lighting under step: Green fluorescent lamp

MOVING WALK SERIES

自动人行道系列

威茨堡系列自动人行道有0°至12°的各种款式供用户选择，广泛应用于各大商场、车站、码头、空港、购物中心、娱乐中心、展览馆等各类公共场所，为您的建筑平添一道亮丽的流动风景线。产品采用了国际先进技术和先进的设计理念，不仅能满足人流量巨大的运输问题，又能满足长距离步行和运送行李车、婴儿车、购物车、残疾车等，使人们在乘坐的时候有如履平地的感觉，大大方便了人们的出行和购物。威茨堡自动人行道以精巧的结构、精良的梯路、精致的带路，典雅独特的设计造型，繁荣了运行中的世界。

There are several models of moving walk from WELLS brand, from 0°~12°, available for consumers' choices. They are widely used in all public places, such as markets, stations, docks, airports, shopping malls, entertainment centers, exhibition building, etc., adding remarkable and beautiful moving scenery for your buildings. The advanced technologies and design ideas in the world are adopted in the products, which can not only transport a large number of passengers but also deliver fourgons, baby carriages, shopping carts, wheelchairs, etc. making people feel walking on the flat ground, greatly facilitating people's travel and shopping. With our exquisite structures, superior stairs, fine pedrail ways and elegant unquely-designed forms, WELLS products contribute a lot to the prosperity of the moving world.



主要规格 Main specification

安装场合: 室内/半户外/户外
运行时间: 每天可运行24小时
提升高度: 1.0~15.0m
倾斜度: 10°/11°/12°
梯级宽度: 800/1000mm
梯路上部曲率半径: 3500mm
速度: 0.5m/s
运输能力: 4800/6000人/小时
电源供应: 三相交流380V/50HZ
照明电源: 单相220V/50HZ

Installaton place: Indoor/semi-outdoor/outdoor
Transit/running time: 24 hours per day
Rise height: 1.0~15.0m
Inclination: 10°/11°/12°
Step width: 800/1000mm
Upside curvature radius of escalator steps: 3500mm
Speed: 0.5m/s
Delivery capacity: 4800/6000 persons per hour
Power supply: Three phases AC 380V/50HZ
Lighting power: Single phase AC 220V/50HZ

外观设计 Exterior design

扶手设计: 普通型/苗条型垂直玻璃扶栏10mm厚安全钢化玻璃
扶手支架: 铝合金/发纹不锈钢
扶手带: 黑色环状硫化橡胶带，内嵌钢丝绳
内外盖板: 发纹不锈钢
围裙版: 发纹不锈钢
踏板: 不锈钢冲压成型，黑色电泳漆
梯级安全标记: 黄色塑料安全边界
乘降板: 蚀刻不锈钢，带黑色防滑图案
操作板: 红色急停按钮和上下行启动钥匙开关

Handrail design: Common type/slim type, vertical 10mm tempered glass of high security
Handrail bracket: Aluminum alloy/hairline SS
Handrail: Sulfurized black rubber ring-belt, inserted steel wire rope
Exterior/interior panel or decking: Hairline SS
Skirt board: Hairline SS
Footplate: Stainless steel punched forming, black electrophoretic paint
Security sign of footplate: Yellow plastic safety line
Landing board: Rammed antislip stainless-steel (etched stainless steel for option with black antislip patterns)
Operation panel: Red emergency stop button and key switch to up or down

INNOVATIVE TECHNOLOGY

创新技术

梯级缺失保护装置

Step Loss Protection Device

该监测装置应在驱动站和转向站各设置一个，以确保无论设备上行还是下行，因梯级（踏板）缺失而导致的缺口都不会出现在入口处。驱动站和转向站所设置监测装置的保护功能应在正常运行状态下，分别进行验证。该装置动作后，只有手动复位。

The detector is in driving station and turning station respectively. It ensures that the gap because of step (tread) loss does not appear in the entry at up / down end. Driving station and turning station sets protective detection functions. They shall be verified respectively under normal operation conditions. After the device acts, it can only be reset manually.

围裙板刷

Skirt panel brush

可选用的安全装置。在围裙板和梯级之间装有刷子使乘客的鞋子不会碰到围裙板。

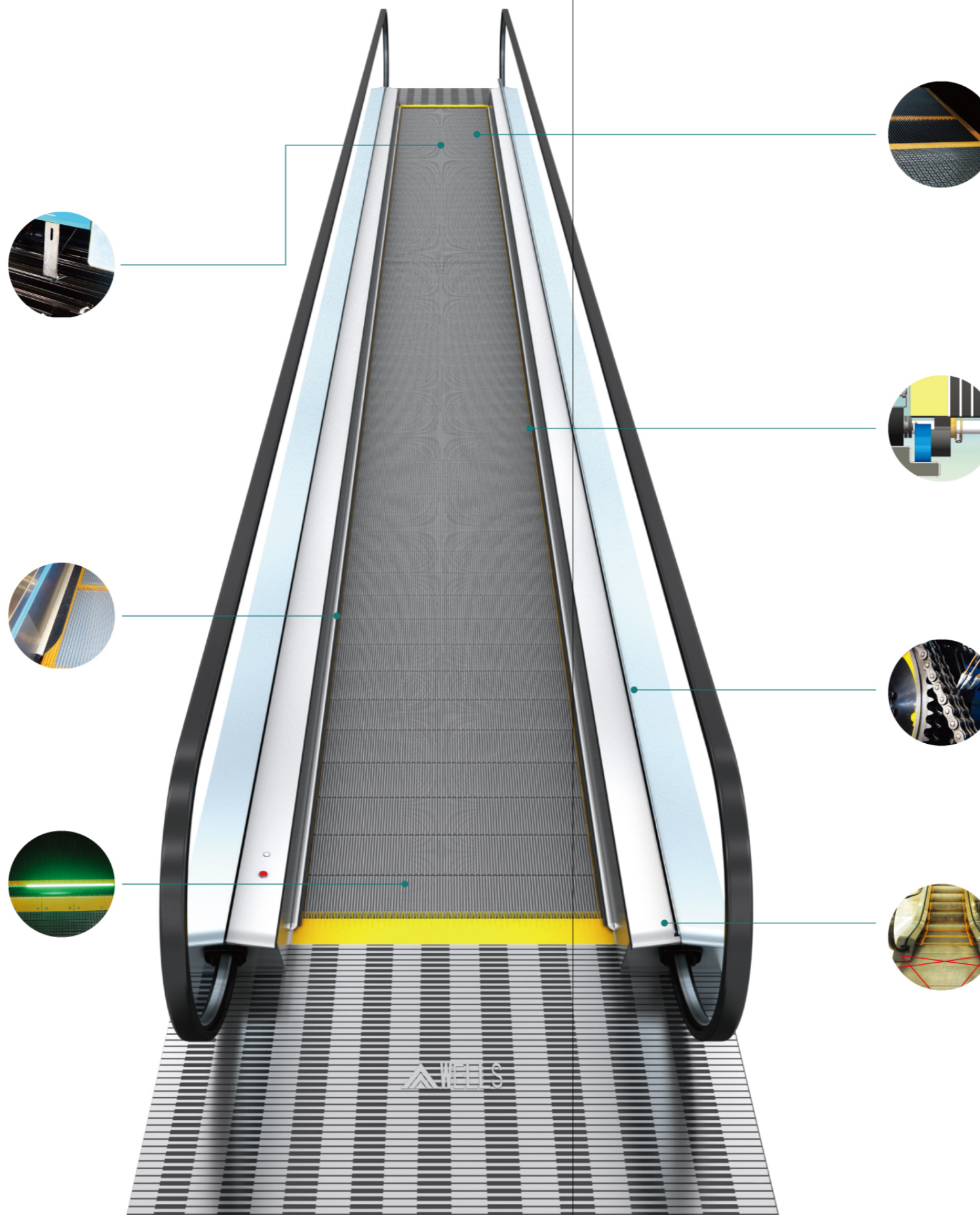
Optional safety device: brush is installed between step and skirting so that the passengers' shoes do not touch the skirt panel.

登梯照明

Demarcation lamp

绿色荧光柔和地从上/下端部相邻两节梯级（踏板）的啮合齿口中照射出，以提醒乘客注意梯级进出水平段，提高乘梯安全。

Soft and green fluorescent light sends out from the engaging teeth in-between two adjacent steps (treads) at up / down end. It reminds the passengers to pay attention to the step entry / exit horizontal section. It thus enhances the travel safely.



梳齿安全装置

Comb Teeth Safety Devices

梳齿板前端安装在弹簧上。如果有异物夹在运动的梯级和静止的梳齿板之间，梳齿板会向垂直或后退方向动作，触发监控梳齿板两侧的安全开关，自动扶梯就会自动停止。

Front ends of comb teeth plates are installed on springs. If any foreign substance is nipped between moving escalator steps and static comb teeth plates; such plates will move in vertical or backward directions, and trigger the safety switches monitoring at both sides of the plates, and the escalators will be automatically stopped.

高精度梯路侧导向导轨系统

High accuracy step guide rail system

导轨系统采用大截面带肩导轨，实现梯级的高精密度横向定位，可以有效地保证梯级与裙板间保持最小的间隙，降低了裙板与梯级间隙异物夹入的危险。

High rigidity big profile guide rail with nose used as transverse step positioning, guarantee the minimum gap between the skirt and step, decrease the possibility of objects clamp in between.

自动润滑系统

Automatic Lubricator

由微机控制，在设定的时间里发出加油信号，自动接通液压泵，进行加油润滑。

It is controlled by micro-computer. It gives lubricating signal within the set period. It automatically connects with hydraulic pump for oiling and lubrication.

扶手入口安全保护

Handrail entry safety protection

当扶手入口有异物夹住时起保护作用。

Protection against risk of foreign matters being jammed into handrail entry.

STANDARD FUNCTION

标准功能

功能名称 Func.name	功能描述 Func.description
静电保护 Static electricity protection	<ul style="list-style-type: none"> 消除梯级（踏板）在运行产生的静电 Eliminate static electricity raised from running of steps.
急停保护 Emergency stop button	<ul style="list-style-type: none"> 当需要紧急停车时，按下急停开关起保护 Push the emergency stop button to stop the escalator/moving walk in emergency case.
围裙保护 Skirting protection	<ul style="list-style-type: none"> 当异物夹入梯级（踏板）与围裙之间起保护 Protection against risk of foreign bodies being jammed into clearance between steps and skirting.
扶手入口安全保护 Handrail entry safety protection	<ul style="list-style-type: none"> 当扶手入口有异物夹住时起保护 Protection against risk of foreign bodies being jammed into handrail entry.
驱动连接保护 Main drive chains safety protection	<ul style="list-style-type: none"> 当驱动链断裂或过长时起保护 Protection against risk of drive chains being breakage or undue elongation.
超速保护 Over-speed protection	<ul style="list-style-type: none"> 当速度高于额定速度的20%时起作用 Protection against risk of speed being over 20% of rated speed.
欠速保护 Under-speed protection	<ul style="list-style-type: none"> 当速度低于额定速度的80%时起作用 Protection against risk of speed less than 80% of rated speed.
非操作逆转保护 Un-intentional reversal protection	<ul style="list-style-type: none"> 当梯级和扶手的运行方向和指定方向相反时起保护 Protection against risk of unintentional reversal protection.
缺、错相保护 Lack of phase, error phase protection	<ul style="list-style-type: none"> Protection against risk of phase failure. 当动力电源缺相或错相时起保护
短路保护 Short circuit protection	<ul style="list-style-type: none"> 当动力回路短路时起保护 Protection against risk of short circuit.
过载保护 Over-load protection	<ul style="list-style-type: none"> 当电机持续过载时起保护 Protection against risk of motor continually over-load.
梯级（踏板）下陷保护 Step sagging protection	<ul style="list-style-type: none"> 当梯级（踏板）损坏而下陷时起保护 Protection against risk of steps being breakage and sagging.
梯级（踏板）链断裂保护 Broken step chain protection	<ul style="list-style-type: none"> 当梯级（踏板）链断裂或过长时起保护 Protection against risk of step chains being broken or under elongation.
梳齿安全保护 Comb teeth safety protection	<ul style="list-style-type: none"> 当异物夹入梳齿时起保护 Protection against risk of foreign bodies being trapped at th point where the step enter the comb.
扶手带速度及断带监控 Handrail speed and broken handrail monitor	<ul style="list-style-type: none"> 检测扶手带速度及断带监控 It detects the handrail speed and monitors the broken handrail.
围裙板防夹装置 Skirting anti-clamp device	<ul style="list-style-type: none"> 在梯级两边的裙板上设置保护刷 It sets protection brush in the skirting on both sides of the step.
梯级丢失检测 Step missing detection	<ul style="list-style-type: none"> 用于探测梯路中梯级的丢失 It detects the step missing in the stairway.
马达过热保护 Motor Overheat Protection	<ul style="list-style-type: none"> 当马达运行时，温度超过一定值，扶梯将自动停止，以免马达损坏 When the temperature of motor increased over a certain level, the escalator stops, in order to prevent the motor from damaging.
盘车轮及盘车轮防护罩打开安全开关 Handwheel and handwheel protection cover open safety	<ul style="list-style-type: none"> 当需要手动盘车，打开主机上的盘车轮及盘车防护罩时，安全开关将切断安全电路，防止电梯打开 During the use of handwheel, when open the handwheel and the handwheel protection cover, the safety switch will cut the safety circuit against escalator running.
楼层板监测开关 Floor-plate monitor switch	<ul style="list-style-type: none"> 当底坑盖板打开时断开安全电路和停止自动扶梯的安全开关 When the pit cover plate opens, it cuts off safety circuit and stops the escalator.
制动距离的监测 Monitor of brake distance	<ul style="list-style-type: none"> 监测自动扶梯及自动人行道制停时的距离 It monitors brake distance of the escalator and auto-walk.

OPTIONAL FUNCTION

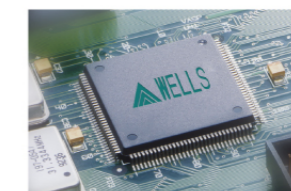
选配功能

变频控制技术

Frequency converter

选用频率变换器，能有效地降低能源消耗，在人流稀少的场合通常能节能60%，并能有效减少峰值电流80%。在空载情况下，自动扶梯以低速运行，当检测到乘客接近时即恢复正常速度运行。

When applies the frequency inverter, it can effectively reduce the energy consumption, usually save 60% of the energy in the little passenger flow and efficiently cut down 80% of the peak-value current. The escalator operates at low speed under no-load conditions, while detects the accessing passenger, it will return to normal speed for the operation.

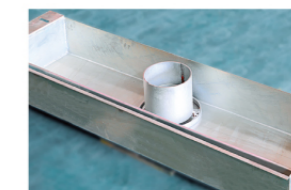


油水分离器（适用于室外型）

Oil / water separator (Apply to outdoor type)

将扶梯的油水进行分离，雨水通过油水分离器排出，油污进行定期清洗，主要起到环保作用。

It separates the escalator oil and water. Rain exhausts through oil / water separator. We regularly clean oil mainly for the environmental protection purpose.



梳齿照明

Comb illumination

照明被安装在靠近梳齿板旁的围裙板上，为梯级和梳齿板提供照明以方便乘客安全的乘坐。

The illumination has been installed in the skirt panel near the comb plate. It offers the lighting for the step and the comb plate. It is more convenient for the passengers to go up and down.



间歇运行（自动启动/停止）

Intermittent operation (automatic start / stop)

隐藏于新型入口内部的传感器可以检测到进入楼层板的乘客，并自动开始运行，当所有乘客离开后会自动停止，以节约能耗。

The sensor under the handrail which is near the floor plate can detect the passenger that enters into the escalator, and then it will automatically start into the operation. After all the passengers leave, it will automatically stop the operation again in order to save the energy.



OPTIONAL FUNCTION

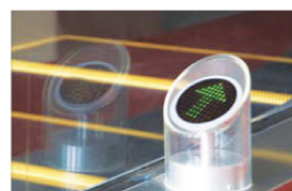
选配功能

运行方向指示

Running direction indicator

运行方向和禁行显示标识置于扶手带入口处，以显而易见的运行或禁行指示，确保乘客安全自如地乘坐。

The running direction and forbidden display mark have been placed in the inlet and outlet of the handrail. The obvious running or forbidden instruction ensures the safe riding of the passengers with great ease.

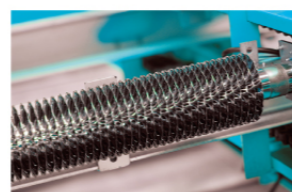


加温装置

Heating device

上部安装在上机房主机边，主要对上部机房进行加热，中部安装在扶梯中部，下部安装在下机房，主要对整个梯路进行加热。

Some of outdoor type escalators are equipped with three heating devices. One is beside the host in the upper machine room. It mainly heats the host, the second is installed in the mid escalator, and the third is in the lower part. It mainly heats the whole escalator.



扶手带颜色

Handrail color

可供选择的色彩各异的扶手颜色。Optional and diversified handrail colors.



黑 Black 红 Red 橙 Orange 蓝 Blue 浅绿蓝 Shallow bluish green 灰 Gray

护栏玻璃颜色

Balustrade glass color



无色透明(标配)
Colorless and transparent
(Standard)



灰色
Deep gray



古铜色
Bronze



黄色
Yellow

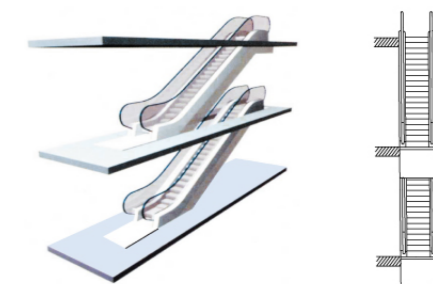
PERFECT LAYOUT

完美布局

断续布置式（单向交通）

Intermittent layout style (one-way traffic)

适用于较小型商场中三个楼层之间的运行。
Suitable for small-sized shopping malls with three floors.

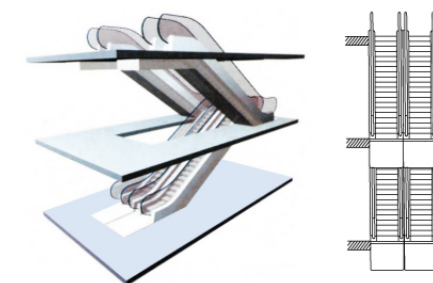


平行连续布置式（双向交通）

Parallel and continuous layout style (two-way traffic)

这种分置对顾客来说，有些不大方便，但对商场主来说却很有优越性，因为您可以在顾客换乘扶梯的路上向他们提供一些特殊的服务。

The layout of this type may cause slight inconvenience to shoppers, but advantageous for shopping mall owners since they can market certain products and services to shoppers on their way to change escalators.

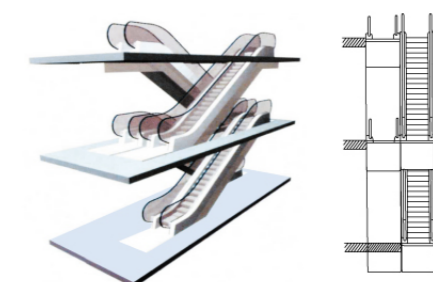


交叉连续布置式（双向交通）

Cross and continuous layout (two-way traffic)

安装在多楼层中的交叉连续布置的扶梯，可以服务于两个运行方向，这种形式多用于商场，现在也越来越多地用在政府机关和公共场所，它可以减少小主楼层之间的运行时间。

Installed in buildings with multiple floors, the crisscross layout can travel in two directions to limit the traveling time between floors. This type is widely used in shopping malls and now being used more and more in government institutes and public places.

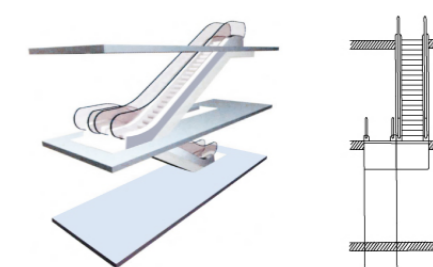


连续布置式（单向交通）

Continuous layout style (one-way traffic)

连续式配置的自动扶梯或人行道，把若干层楼连接起来。它比断续需要更多的空间。

Continuous layout type escalator and moving walk can connect several floors, but they need more space than the inconsistent layout.



SERVICE SYSTEMS

服务体系

品牌高度 从这里起步

威茨堡电梯将售后服务提升为另一种形式下的产品品质，以用户的需求为服务出发点，秉承世界一流的服务管理体系和服务标准，承诺全天候的维修、保养、代办年审等服务项目，让您感受到高端服务水平的温馨与完美！

Brand height starts from here

WELLS Elevator promotes the after-sale service to another form of product quality, takes the customer requirements as the starting point. We insist on the world-class service management system and service standards, promising the all-weather repair, maintenance and annual examination charges' affair, allow you to feel intimate and perfect from the high-end service.



一流的标准

- 配备经验丰富的专业技术团队，时刻为客户提供技术指导
- 承诺30分钟内到达现场，以最短的时间帮助客户解决问题
- 合理安排维保时间，在不影响用户用梯的情况下，及时发现问题，提前排除隐患
- 24小时客户服务热线，保障客户紧急维保需求

The first-class standards

- The experienced technical team is ready to provide technical guidance to clients anytime.
- We promise to reach the site within 30 minutes and solve the problem within the shortest time.
- Reasonable time arrangement ensures to find the problem in time and eliminate the risk with no interrupting the clients' use.
- 24 hour service hotline guarantees the clients' emergency needs.



一流的体系

无论售前、售中还是售后，直至产品终身使用年限，提供全程一站式精细服务。

定期派出维保人员，对电梯设备进行检测和保养，让您安心、省心、放心。

The first-class systems

No matter before, in or after sale, and even the whole product service life, we offer the whole one-stop service.

We dispatch the technicians periodically to test and maintenance the lifts to make sure you can be rest assured in using them.

